



CARICATURA

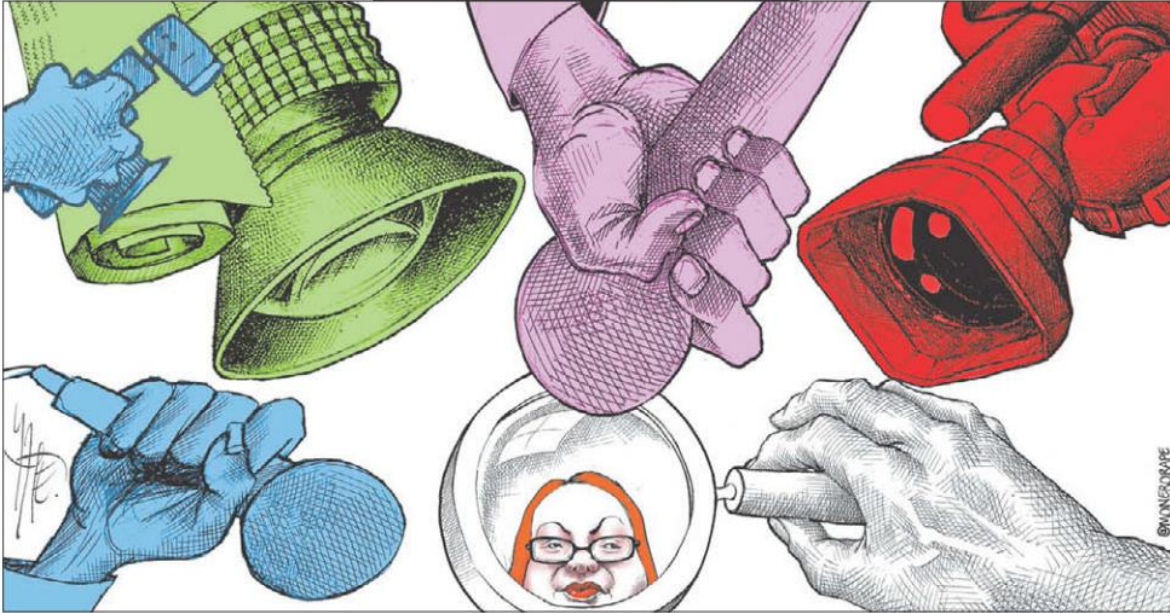
23 de octubre 2024

WALDO De tal Piña tal piñazo



WALDO

RAPÉ/GOLPISTA SUPERSTAR



UN CÓMICO EN HARVARD ● HERNÁNDEZ





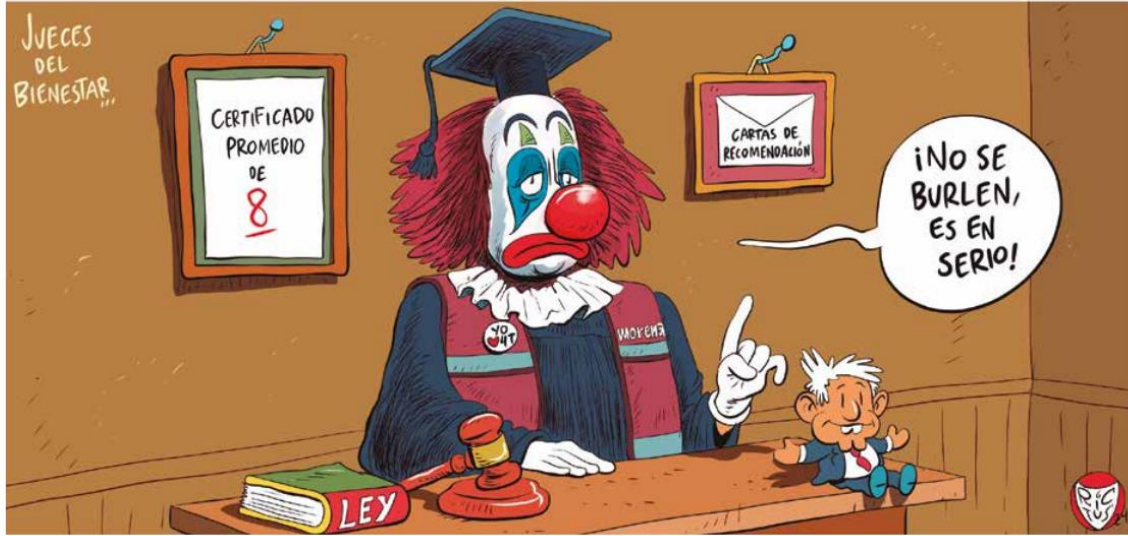


EL PAÍS DE NUNCA JABAZ/CLAUDIA LA DEFENSORA









MONTAJE ● ROCHA

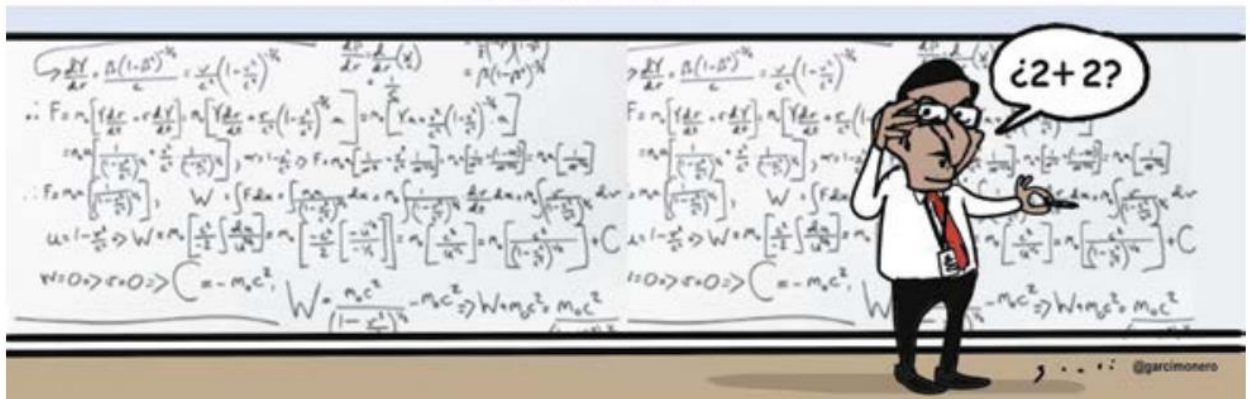


MATARON A JTIK MARCELO ● EL FISGÓN





Las cuentas



The whiteboard contains complex mathematical derivations, including the following equations:

$$\frac{dF}{dt} \cdot \frac{B(1-d)^{t-1}}{c} = \frac{d}{c} (1-d)^{t-1}$$

$$F = \frac{d}{c} \int_0^T (1-d)^{t-1} dt = \frac{d}{c} \left[\frac{(1-d)^t}{-d} \right]_0^T = \frac{1 - (1-d)^T}{c}$$

$$W = \int_0^T F dt = \int_0^T \frac{d}{c} \left[\frac{(1-d)^t}{-d} \right] dt = \frac{1}{c} \int_0^T (1-d)^t dt = \frac{1}{c} \left[\frac{(1-d)^t}{-d} \right]_0^T = \frac{1 - (1-d)^{T+1}}{c d}$$

$$W = \frac{1 - (1-d)^{T+1}}{c d} \Rightarrow W d = \frac{1 - (1-d)^{T+1}}{c} \Rightarrow W d c = 1 - (1-d)^{T+1}$$

The cartoon character has a speech bubble that says "¿2+2?".

MULTIDIRECCIONES CONSTITUCIONALES LUY



GREGORIO

CACERÍA DE BRUJAS





VILLAFUERTE/TRUMPADA

